

# Straphangers Campaign

## R SUBWAY LINE PROFILE



Straphangers Campaign  
MetroCard Rating

95¢

The R line ranks tied for 16th place out of the 21 subway lines rated by the Straphangers Campaign. Our ranking is based on the MTA New York City Transit data below, using a method described at [www.straphangers.org](http://www.straphangers.org).

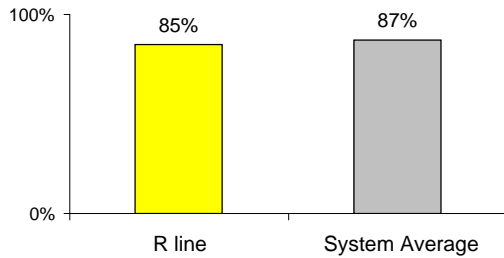
### The R is scheduled to come less often than the average line...

scheduled minutes between weekday trains  
as of December 2008

	AM Rush	Noon	PM Rush	Overnight
<b>R line</b>	<b>6</b>	<b>10</b>	<b>6</b>	<b>20</b>
<b>System Average</b>	<b>5:25</b>	<b>8:20</b>	<b>5:45</b>	<b>20</b>

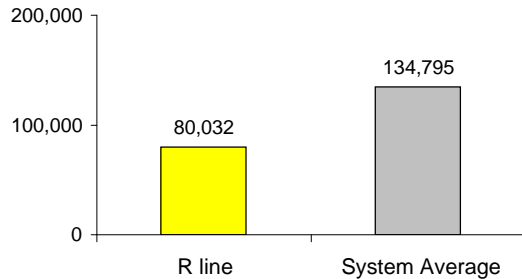
### and arrives with near-average regularity.

% of trains arriving at regular intervals (without gaps in service or train "bunching") between 6 am and midnight



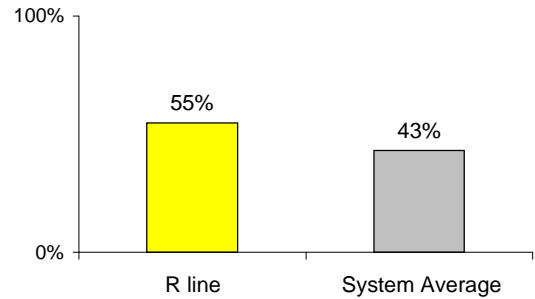
### Cars on the R break down more often than those on the average line.

average miles traveled between delays caused by mechanical failures, 2008



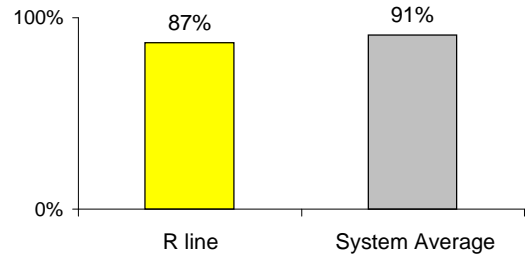
### You're more likely to get a seat on the R.

% of passengers with seats at most crowded point during rush hour



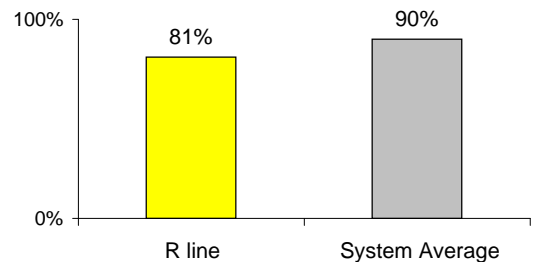
### The R line is less clean than average...

% of cars with 'light or no interior dirtiness' as defined by NYC Transit



### and performs below average on in-car announcements.

% of cars with correct announcements as defined by NYC Transit



**Suggestions? Questions? Complaints? Call (718) 334-8190**