

Straphangers Campaign

M SUBWAY LINE PROFILE



Straphangers Campaign MetroCard Rating \$1.00

The M line ranks 15th out of the 21 subway lines rated by the Straphangers Campaign. Our ranking is based on the MTA New York City Transit data below, using a method described at www.straphangers.org.

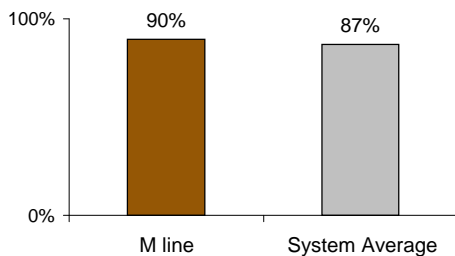
The M line has less daytime service than any other line in the system.

scheduled minutes between weekday trains as of December 2008

	AM Rush	Noon	PM Rush	Overnight
M line	10	10	10	20
System Average	5:25	8:20	5:45	20

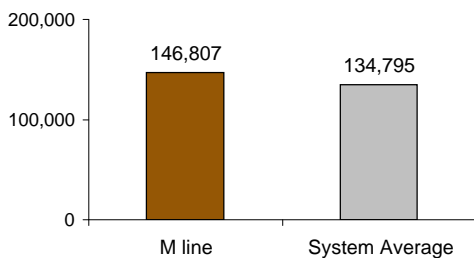
The M arrives with regularity more often than average...

% of trains arriving at regular intervals (without gaps in service or train "bunching") between 6 am and midnight



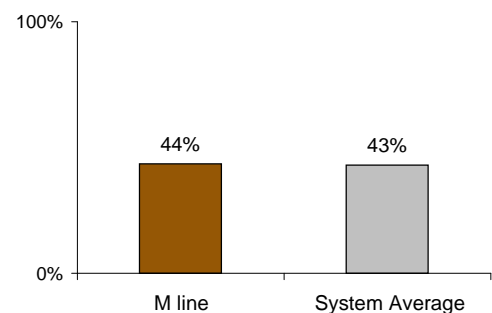
and its cars break down less often than those on the average line.

average miles traveled between delays caused by mechanical failures, 2008



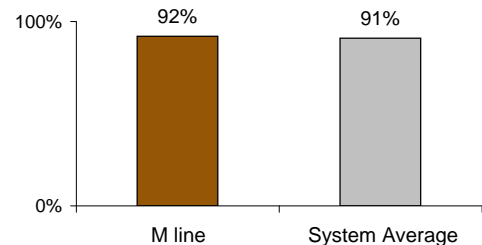
You're more likely to get a seat on the M.

% of passengers with seats at most crowded point during rush hour



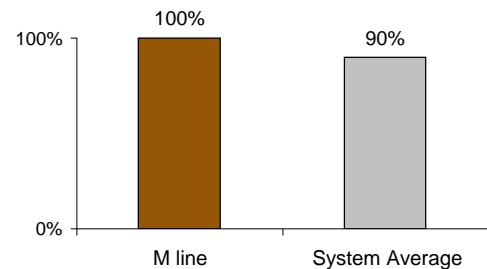
The M performs near the system average on cleanliness...

% of cars with 'light or no interior dirtiness' as defined by NYC Transit



and scores perfectly on in-car announcements.

% of cars with correct announcements as defined by NYC Transit



Suggestions? Questions? Complaints? Call (718) 927-8511