

# Straphangers Campaign

## J/Z SUBWAY LINE PROFILE



**Straphangers Campaign MetroCard Rating \$1.20**

The J & Z lines rank 6th place out of the 21 subway lines rated by the Straphangers Campaign. Our ranking is based on the MTA New York City Transit data below, using a method described at [www.straphangers.org](http://www.straphangers.org).

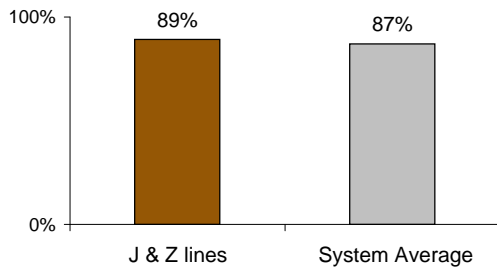
**The J & Z lines have more rush hour but less midday service than the average line.**

scheduled minutes between weekday trains  
as of December 2008

	AM Rush	Noon	PM Rush	Overnight
<b>J &amp; Z lines</b>	<b>5</b>	<b>10</b>	<b>5</b>	<b>20</b>
<b>System Average</b>	<b>5:25</b>	<b>8:20</b>	<b>5:45</b>	<b>20</b>

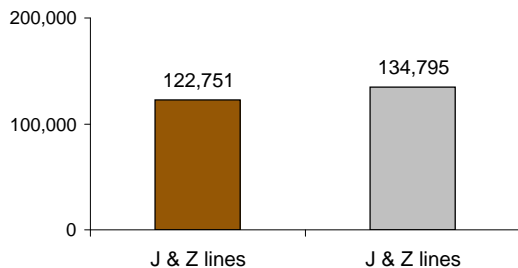
**The J & Z arrive with near-average regularity...**

% of trains arriving at regular intervals (without gaps in service or train "bunching") between 6 am and midnight



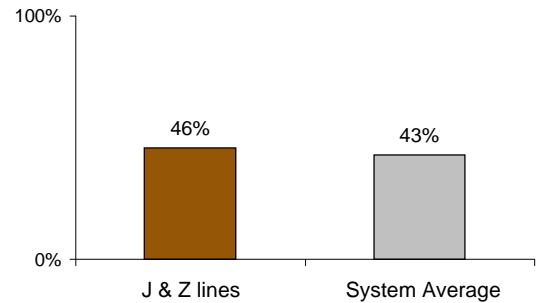
**but cars on the J & Z break down more often than those on the average line.**

average miles traveled between delays caused by mechanical failures, 2008



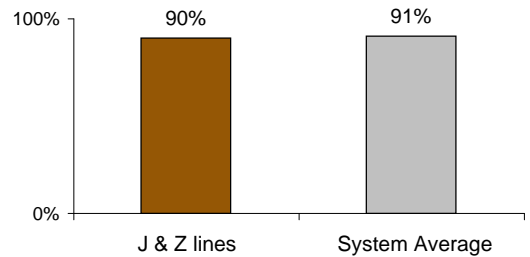
**You're more likely to get a seat on the J & Z.**

% of passengers with seats at most crowded point during rush hour



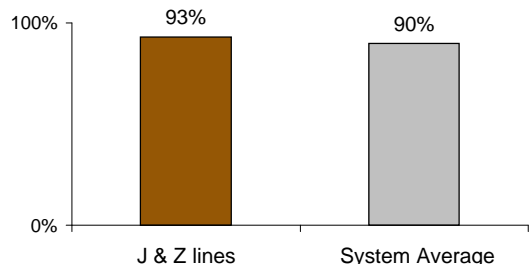
**The J & Z perform near the system average on cleanliness...**

% of cars with 'light or no interior dirtiness' as defined by NYC Transit



**and above average on in-car announcements.**

% of cars with correct announcements as defined by NYC Transit



**Suggestions? Questions? Complaints? Call (718) 927-8511**