

Straphangers Campaign

G SUBWAY LINE PROFILE



The G line profile is based on the MTA New York City Transit information below. (There is no MetroCard Rating for the G. Its data on crowding can not be compared to other lines.) Full methodology is available at www.straphangers.org.

Straphangers Campaign MetroCard Rating **No Rating**

The G line is scheduled to come less often than the average line...

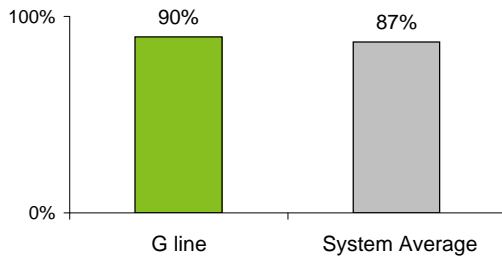
scheduled minutes between weekday trains as of December 2008

	AM Rush	Noon	PM Rush	Overnight
G line	6:30	10	8	20
System Average	5:25	8:20	5:45	20

Reliable crowding data for the G line is not available

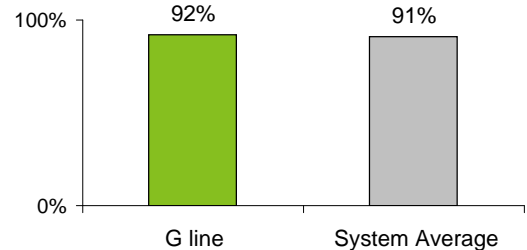
but arrives with above-average regularity.

% of trains arriving at regular intervals (without gaps in service or train "bunching") between 6 am and midnight



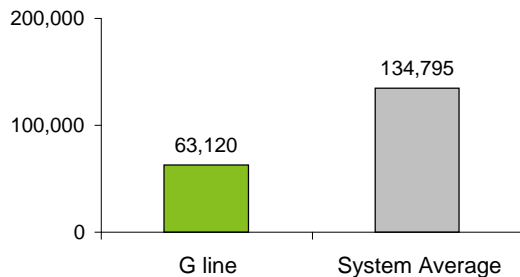
The G line has near-average cleanliness...

% of cars with 'light or no interior dirtiness' as defined by NYC Transit



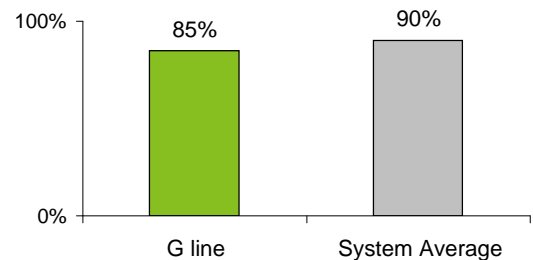
Cars on the G break down more often than those on the average line.

average miles traveled between delays caused by mechanical failures, 2008



but performs below average on in-car announcements.

% of cars with correct announcements as defined by NYC Transit



Suggestions? Questions? Complaints? Call (718) 334-8190