

# Straphangers Campaign

## 6 SUBWAY LINE PROFILE



**Straphangers Campaign MetroCard Rating \$1.30**

The 6 line ranks 4th out of the 21 subway lines rated by the Straphangers Campaign. Our ranking is based on the MTA New York City Transit data below, using a method described at [www.straphangers.org](http://www.straphangers.org).

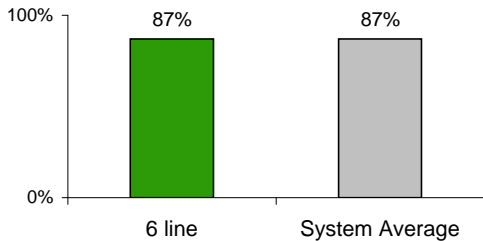
### The 6 line has more service than any other subway line.

scheduled minutes between weekday trains as of December 2008

	AM Rush	Noon	PM Rush	Overnight
<b>6 line</b>	<b>2:30</b>	<b>4</b>	<b>2:30</b>	<b>20</b>
<b>System Average</b>	<b>5:25</b>	<b>8:20</b>	<b>5:45</b>	<b>20</b>

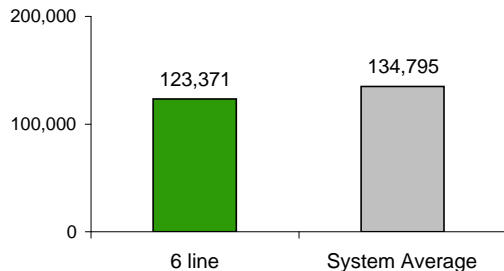
### The 6 line arrives with average regularity...

% of trains arriving at regular intervals (without gaps in service or train "bunching") between 6 am and midnight



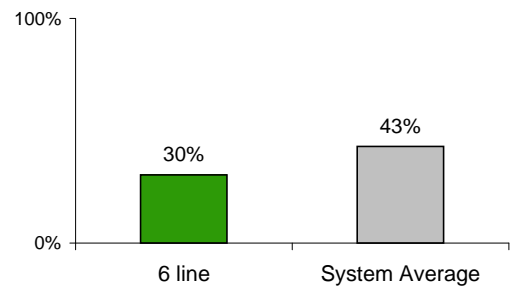
### but its cars break down more often than those on the average line.

average miles traveled between delays caused by mechanical failures, 2008



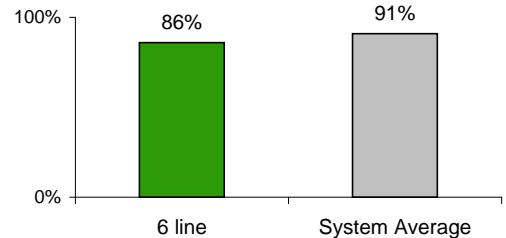
### You're less likely to get a seat on the 6.

% of passengers with seats at most crowded point during rush hour



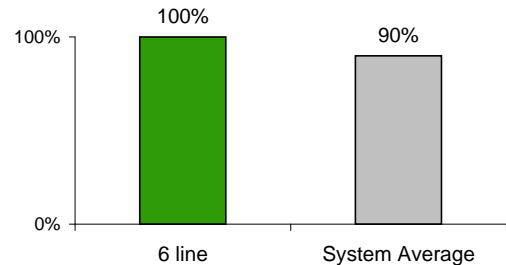
### The 6 line is less clean than average...

% of cars with 'light or no interior dirtiness' as defined by NYC Transit



### but performs perfectly on in-car announcements.

% of cars with correct announcements as defined by NYC Transit



**Suggestions? Questions? Complaints? Call (718) 430-5062**