

# Straphangers Campaign

## 5 SUBWAY LINE PROFILE



The 5 line ranks tied for 8th place out of the 21 subway lines rated by the Straphangers Campaign. Our ranking is based on the MTA New York City Transit data below, using a method described at [www.straphangers.org](http://www.straphangers.org).

**Straphangers Campaign MetroCard Rating \$1.10**

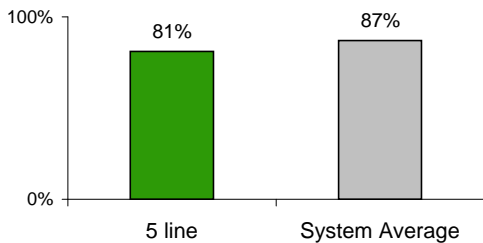
### The 5 line has more rush hour but less midday service than the average line.

scheduled minutes between weekday trains as of December 2008

	AM Rush	Noon	PM Rush	Overnight
<b>5 line</b>	<b>4</b>	<b>10</b>	<b>4</b>	<b>20</b>
<b>System Average</b>	<b>5:25</b>	<b>8:20</b>	<b>5:45</b>	<b>20</b>

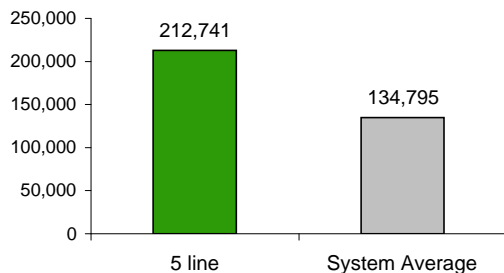
### The 5 line arrives with regularity less often than average...

% of trains arriving at regular intervals (without gaps in service or train "bunching") between 6 am and midnight



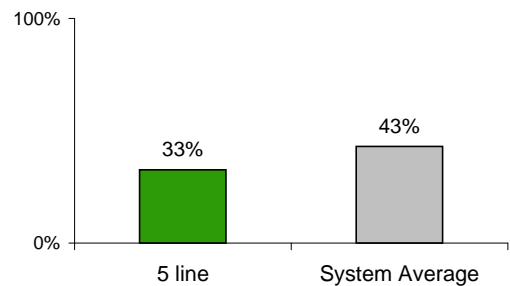
### but its cars break down less often than those on the average line.

average miles traveled between delays caused by mechanical failures, 2008



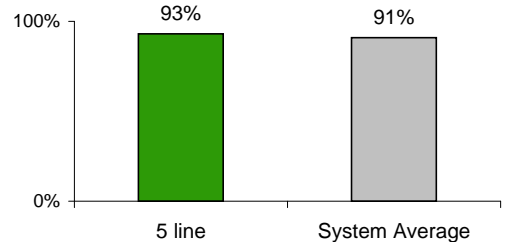
### You're less likely to get a seat on the 5.

% of passengers with seats at most crowded point during rush hour



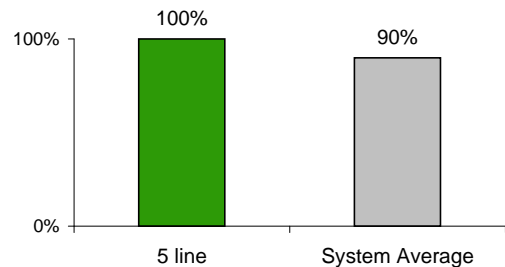
### The 5 line is has near-average cleanliness...

% of cars with 'light or no interior dirtiness' as defined by NYC Transit



### and performs perfectly on in-car announcements.

% of cars with correct announcements as defined by NYC Transit



**Suggestions? Questions? Complaints? Call (718) 430-5161**