

Straphangers Campaign

M SUBWAY LINE PROFILE



Straphangers Campaign MetroCard Rating 75¢

The M line ranks next to worst out of the 21 subway lines rated by the Straphangers Campaign. Our ranking is based on the MTA New York City Transit data below, using a method described at www.straphangers.org.

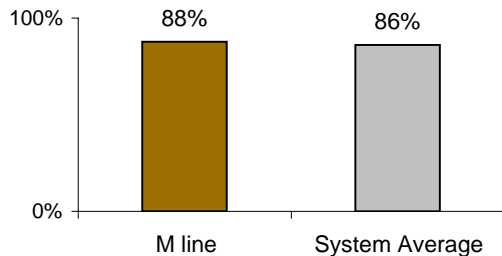
The M is tied for least amount of scheduled service...

scheduled minutes between weekday trains as of December 2007

| | AM Rush | Noon | PM Rush | Overnight |
|-----------------------|-------------|-------------|-------------|-----------|
| M line | 10 | 10 | 10 | 20 |
| System Average | 5:33 | 8:20 | 5:45 | 20 |

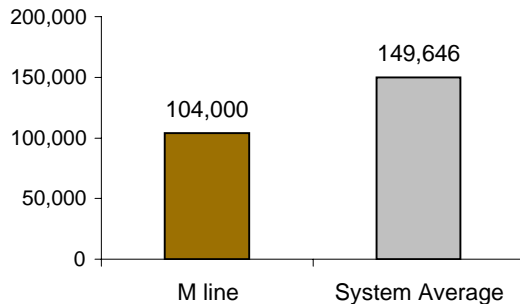
but arrives with above-average regularity...

% of trains arriving at regular intervals (without gaps in service or train "bunching") between 6 am and 9 pm



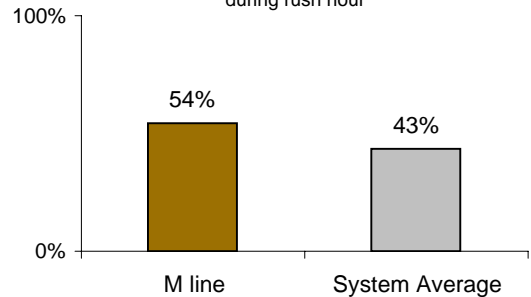
Cars on the M break down more often than those on the average line.

average miles traveled between delays caused by mechanical failures, 2007



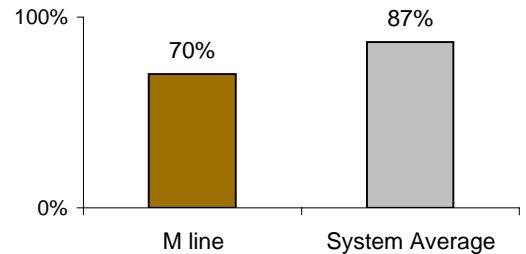
You're more likely to get a seat on the M.

% of passengers with seats at most crowded point during rush hour



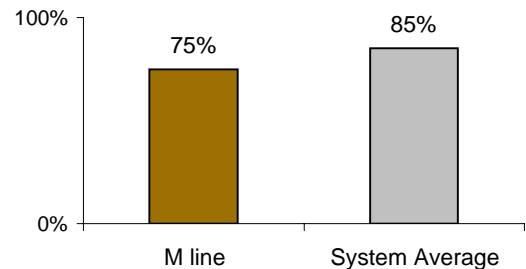
The M line is less clean than average...

% of cars with 'light or no interior dirtiness' as defined by NYC Transit



and performs below average on in-car announcements.

% of cars with correct announcements as defined by NYC Transit



Suggestions? Questions? Complaints? Call (718) 927-8511