

# Straphangers Campaign

## L SUBWAY LINE PROFILE



**Straphangers Campaign MetroCard Rating \$1.40**

The L line ranks best of the 21 subway lines rated by the Straphangers Campaign. Our ranking is based on the MTA New York City Transit data below, using a method described at [www.straphangers.org](http://www.straphangers.org).

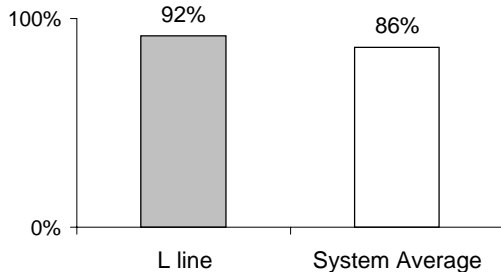
### The L line is scheduled to come more often than the average line...

scheduled minutes between weekday trains as of December 2007

	AM Rush	Noon	PM Rush	Overnight
<b>L line</b>	<b>3:30</b>	<b>6</b>	<b>4</b>	<b>20</b>
<b>System Average</b>	<b>5:33</b>	<b>8:20</b>	<b>5:45</b>	<b>20</b>

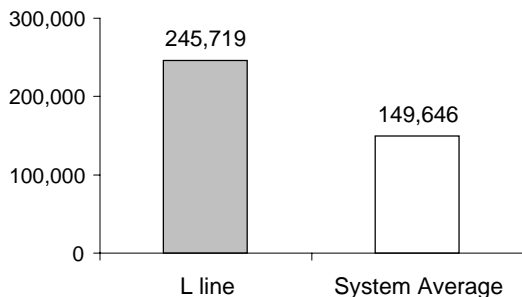
### and arrives with the best regularity of any line.

% of trains arriving at regular intervals (without gaps in service or train "bunching") between 6 am and 9 pm



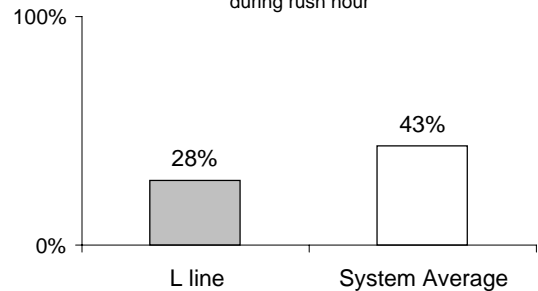
### Cars on the L break down less often than those on other lines.

average miles traveled between delays caused by mechanical failures, 2007



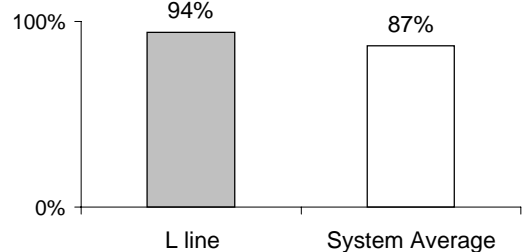
### You're less likely to get a seat on the L.

% of passengers with seats at most crowded point during rush hour



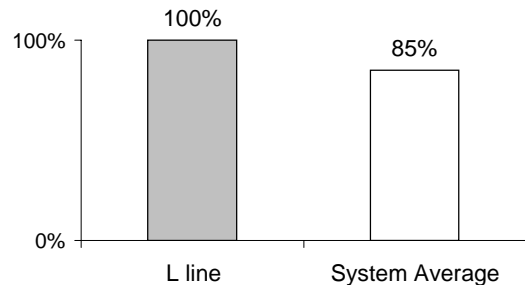
### The L line is cleaner than average...

% of cars with 'light or no interior dirtiness' as defined by NYC Transit



### and performs perfectly on in-car announcements.

% of cars with correct announcements as defined by NYC Transit



**Suggestions? Complaints? Call the L line general manager at (347) 694-1056**