

Straphangers Campaign

J/Z SUBWAY LINE PROFILE



Straphangers Campaign MetroCard Rating \$1.15

The J & Z lines rank tied for 6th place out of the 21 subway lines rated by the Straphangers Campaign. Our ranking is based on the MTA New York City Transit data below, using a method described at www.straphangers.org.

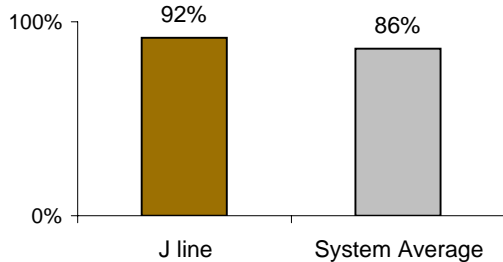
The J & Z lines have more rush hour but less midday service than the average line.

scheduled minutes between weekday trains
as of December 2007

	AM Rush	Noon	PM Rush	Overnight
J line	5	10	5	20
System Average	5:33	8:20	5:45	20

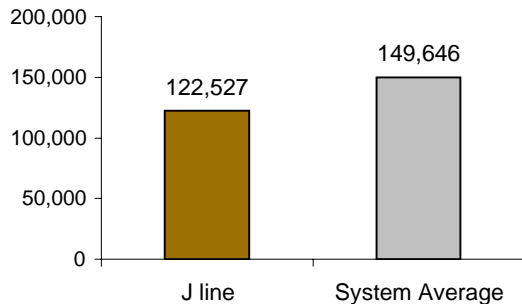
The J & Z lines arrive with above-average regularity...

% of trains arriving at regular intervals
(without gaps in service or train "bunching")
between
6 am and 9 pm



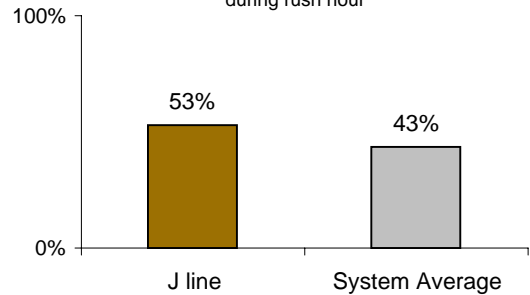
but cars on the J & Z break down more often than those on the average line

average miles traveled between delays caused
by mechanical failures, 2007



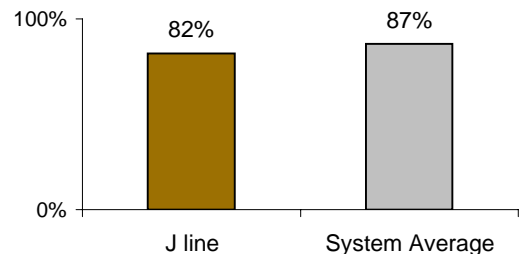
You're more likely to get a seat on the J & Z.

% of passengers with seats at most crowded point
during rush hour



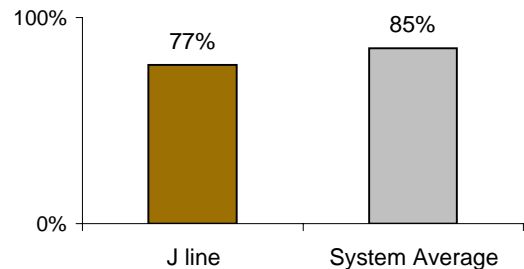
The J & Z lines are less clean than average...

% of cars with 'light or no interior dirtiness' as
defined by NYC Transit



and perform below average on in-car announcements.

% of cars with correct announcements as defined
by NYC Transit



Suggestions? Questions? Complaints? Call (718) 927-8511