

Straphangers Campaign

G SUBWAY LINE PROFILE



The G line profile is based on the MTA New York City Transit information below. (There is no MetroCard rating for the G. Its data on crowding can not be compared to other lines.) Full methodology is available at www.straphangers.org.

Straphangers Campaign MetroCard Rating
No Rating

The G line is scheduled to come less often than the average line...

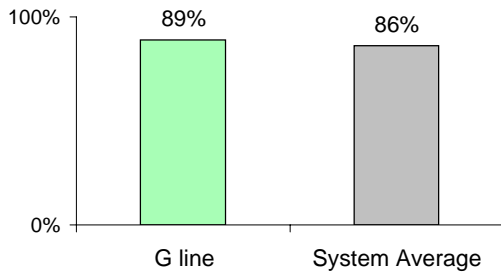
scheduled minutes between weekday trains as of December 2007

	AM Rush	Noon	PM Rush	Overnight
G line	6:30	10	8	20
System Average	5:33	8:20	5:45	20

Reliable crowding data for the G line is not available

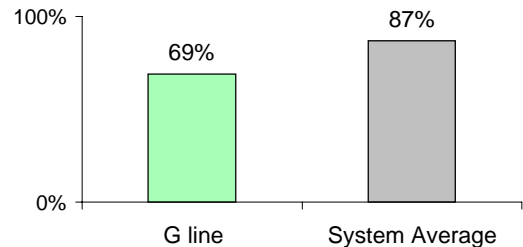
but arrives with above-average regularity.

% of trains arriving at regular intervals (without gaps in service or train "bunching") between 6 am and 9 pm



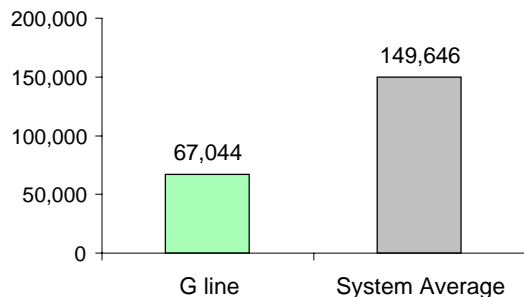
The G line is the system's dirtiest...

% of cars with 'light or no interior dirtiness' as defined by NYC Transit



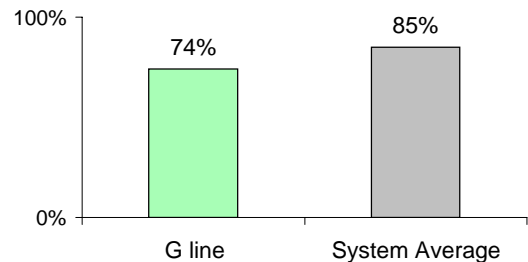
Cars on the G break down the most of any subway line.

average miles traveled between delays caused by mechanical failures, 2007



and it performs below average on in-car announcements.

% of cars with correct announcements as defined by NYC Transit



Suggestions? Questions? Complaints? Call (718) 927-8511