

Straphangers Campaign

D SUBWAY LINE PROFILE



The D line ranks tied for 13th place out of the 21 subway lines rated by the Straphangers Campaign. Our ranking is based on the MTA New York City Transit data below, using a method described at www.straphangers.org.

Straphangers Campaign MetroCard Rating \$1.00

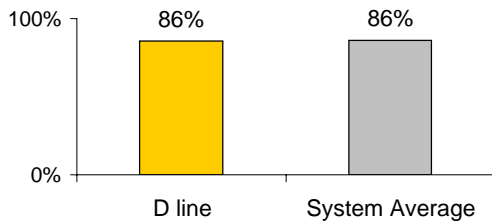
The D line is scheduled to come less often than the average line...

scheduled minutes between weekday trains as of December 2007

	AM Rush	Noon	PM Rush	Overnight
D line	6	10	6:15	20
System Average	5:33	8:20	5:45	20

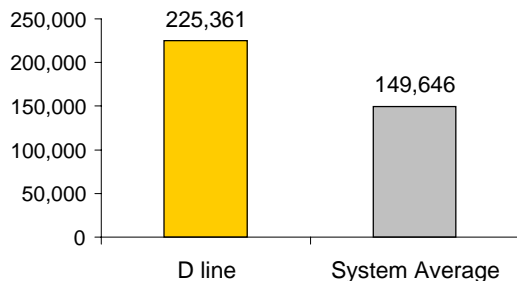
but arrives with average regularity.

% of trains arriving at regular intervals (without gaps in service or train "bunching") between 6 am and 9 pm



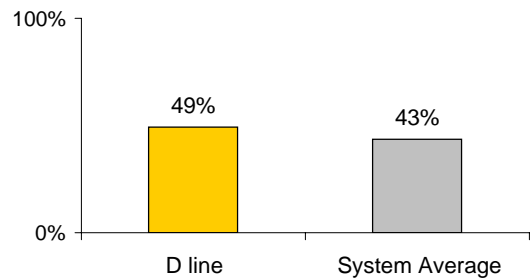
Cars on the D break down less often than those on the average line.

average miles traveled between delays caused by mechanical failures, 2007



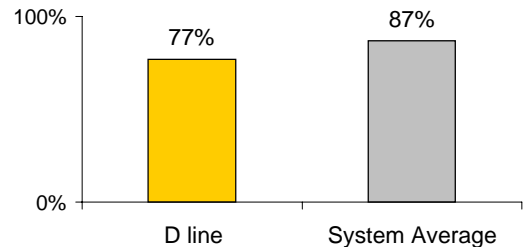
You're more likely to get a seat on the D.

% of passengers with seats at most crowded point during rush hour



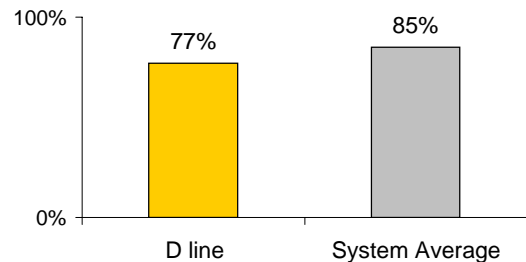
The D line is less clean than average...

% of cars with 'light or no interior dirtiness' as defined by NYC Transit



and performs below average on in-car announcements.

% of cars with correct announcements as defined by NYC Transit



Suggestions? Questions? Complaints? Call (718) 927-8511