

Straphangers Campaign

A SUBWAY LINE PROFILE



The A line ranks 8th out of the 21 subway lines rated by the Straphangers Campaign. Our ranking is based on the MTA New York City Transit data below, using a method described at www.straphangers.org.

Straphangers Campaign MetroCard Rating \$1.10

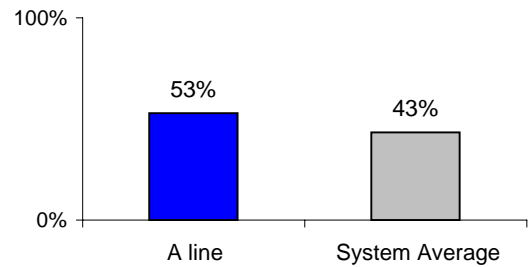
The A line is scheduled to come more often than the average line.

scheduled minutes between weekday trains as of December 2007

	AM Rush	Noon	PM Rush	Overnight
A line	4:45	7:30	4:45	20
System Average	5:33	8:20	5:45	20

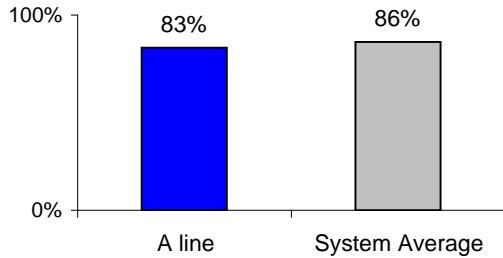
You're more likely to get a seat on the A

% of passengers with seats at most crowded point during rush hour



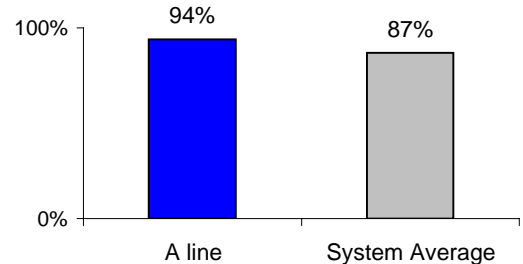
The A arrives with below-average regularity..

% of trains arriving at regular intervals (without gaps in service or train "bunching") between 6 am and 9 pm



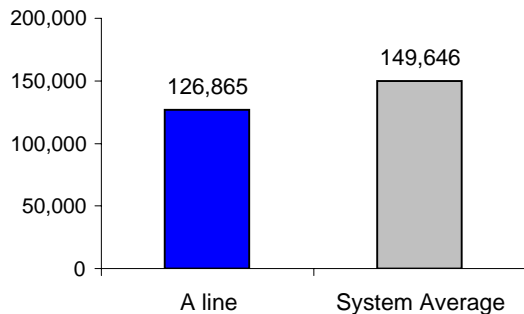
The A line is cleaner than average..

% of cars with 'light or no interior dirtiness' as defined by NYC Transit



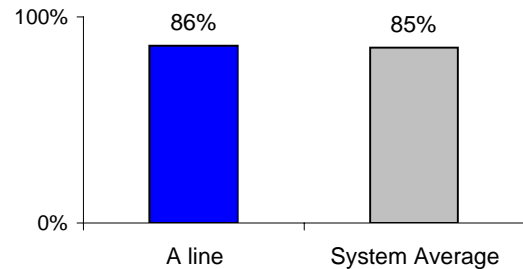
and its cars break down more often than those on the average line.

average miles traveled between delays caused by mechanical failures, 2007



and performs above average on in-car announcements.

% of cars with correct announcements as defined by NYC Transit



Suggestions? Questions? Complaints? Call (718) 927-8511