

Straphangers Campaign

6 SUBWAY LINE PROFILE



Straphangers Campaign MetroCard Rating \$1.20

The 6 line ranks tied for 4th place out of the 21 subway lines rated by the Straphangers Campaign. Our ranking is based on the MTA New York City Transit data below, using a method described at www.straphangers.org.

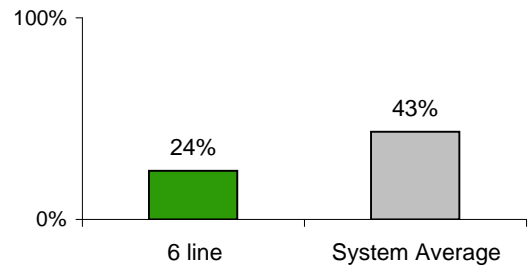
The 6 line has more service than any other line in the system.

scheduled minutes between weekday trains
as of December 2007

	AM Rush	Noon	PM Rush	Overnight
6 line	2:30	4	2:30	20
System Average	5:33	8:20	5:45	20

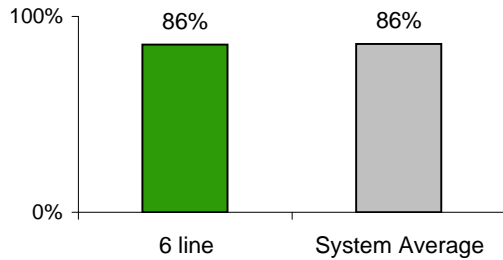
You're much less likely to get a seat on the 6 line

% of passengers with seats at most crowded point during rush hour



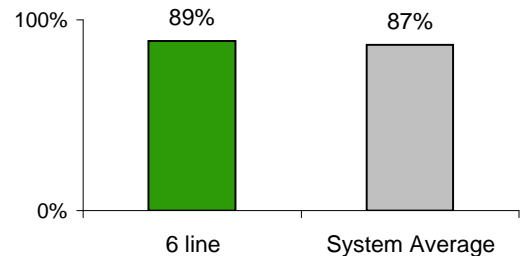
The 6 line arrives with average regularity...

% of trains arriving at regular intervals
(without gaps in service or train "bunching")
between
6 am and 9 pm



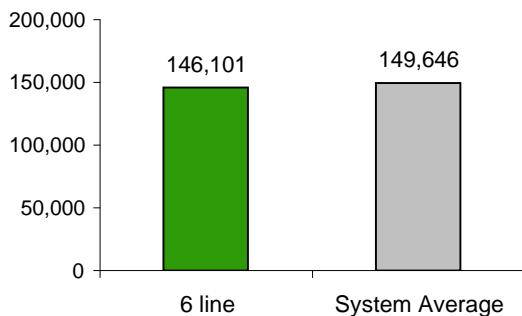
The 6 line is cleaner than average..

% of cars with 'light or no interior dirtiness' as defined by NYC Transit



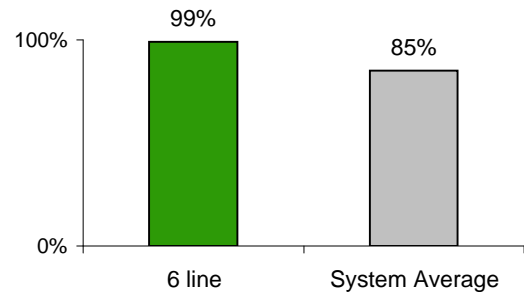
but its cars break down more often than those on the average line.

average miles traveled between delays caused by mechanical failures, 2007



and performs near perfect on in-car announcements.

% of cars with correct announcements as defined by NYC Transit



Suggestions? Questions? Complaints? Call (212) 424-5363