

# Straphangers Campaign

## 5 SUBWAY LINE PROFILE



The 5 line ranks tied for 6th place out of the 21 subway lines rated by the Straphangers Campaign. Our ranking is based on the MTA New York City Transit data below, using a method described at [www.straphangers.org](http://www.straphangers.org).

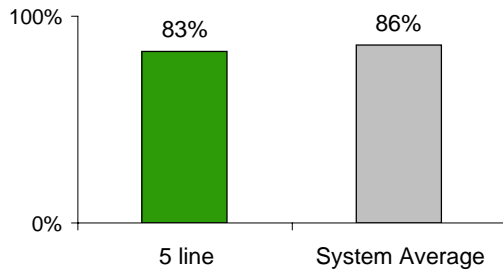
### The 5 line has more rush hour but less midday service than the average line.

scheduled minutes between weekday trains  
as of December 2007

	AM Rush	Noon	PM Rush	Overnight
<b>5 line</b>	<b>4</b>	<b>10</b>	<b>4</b>	<b>20</b>
<b>System Average</b>	<b>5:33</b>	<b>8:20</b>	<b>5:45</b>	<b>20</b>

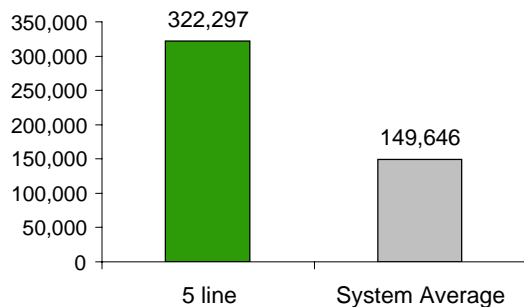
### The 5 line arrives with below-average regularity...

% of trains arriving at regular intervals (without gaps in service or train "bunching") between 6 am and 9 pm



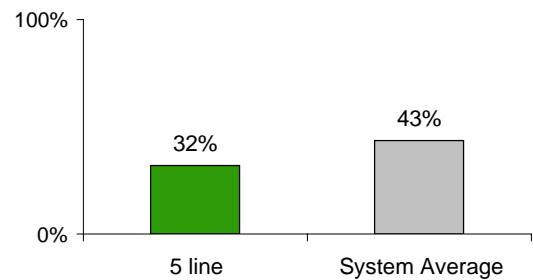
### but its cars break down much less often than those on the average line.

average miles traveled between delays caused by mechanical failures, 2007



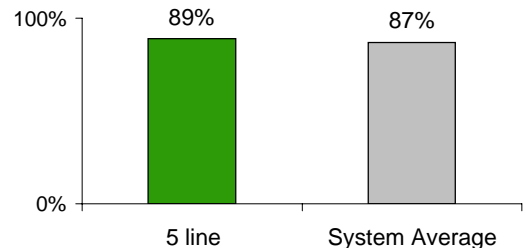
### You're less likely to get a seat on the 5.

% of passengers with seats at most crowded point during rush hour



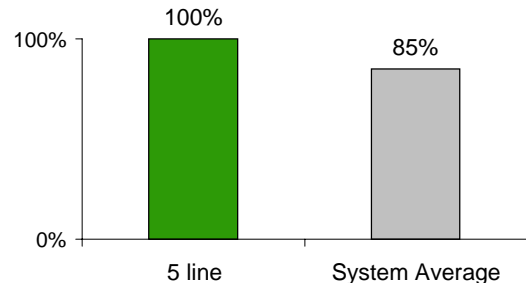
### The 5 line is cleaner than average...

% of cars with 'light or no interior dirtiness' as defined by NYC Transit



### and performs perfectly on in-car announcements.

% of cars with correct announcements as defined by NYC Transit



**Suggestions? Questions? Complaints? Call (212) 424-5363**