

# Straphangers Campaign



## SUBWAY LINE PROFILE

The A line ranks tied for 11th out of the 22 subway lines rated by the Straphangers Campaign. Our ranking is based on the MTA New York City Transit data below, using a method described at [www.straphangers.org](http://www.straphangers.org).



**Straphangers Campaign MetroCard Rating \$1.00**

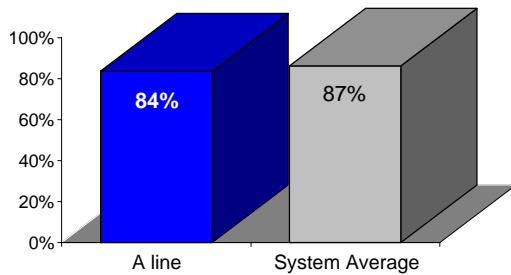
### The A line is scheduled to come more often than most subway lines. . .

scheduled minutes between weekday trains as of January 2006

	AM Rush	Noon	PM Rush	Overnight
<b>A line</b>	<b>4:45</b>	<b>7:30</b>	<b>5</b>	<b>20</b>
<b>System Average</b>	<b>5:33</b>	<b>8:26</b>	<b>5:48</b>	<b>20</b>

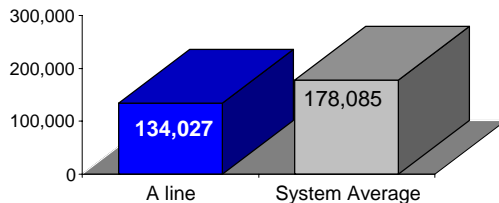
### and arrives with below-average regularity.

% of trains arriving at regular intervals (without gaps in service or train "bunching") between 6 a.m. and 9 p.m.



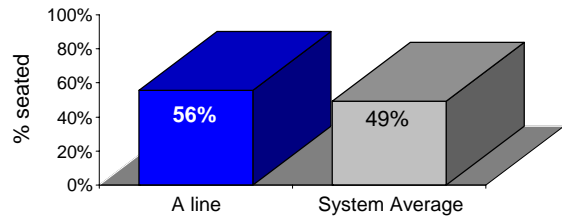
### Cars on the A line break down more often than those on the average line.

average miles traveled between delay: caused by mechanical failures, 2005



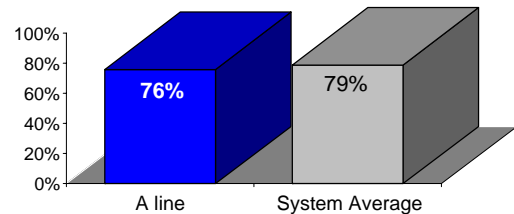
### You're more likely to get a seat on the A line.

% of passengers with seats at most crowded point during rush hour



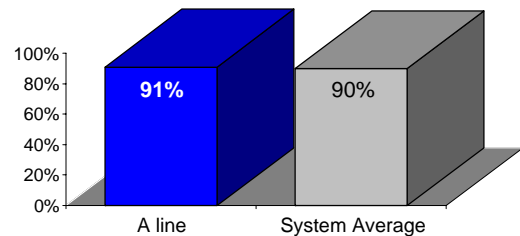
### The A line is less clean than average...

% of cars with 'light or no interior dirtiness' as defined by NYC Transit



### but performs better than average on in-car announcements.

% of cars with correct announcements (as defined by NYC Transit)



**Suggestions? Complaints? Call the A line superintendent at (212) 712-3706.**