

# Straphangers Campaign

## 4 SUBWAY LINE PROFILE

The 4 line ranks 2nd out of the 22 subway lines rated by the Straphangers Campaign. Our ranking is based on the MTA New York City Transit data below, using a method described at [www.straphangers.org](http://www.straphangers.org).



**Straphangers Campaign MetroCard Rating \$1.25**

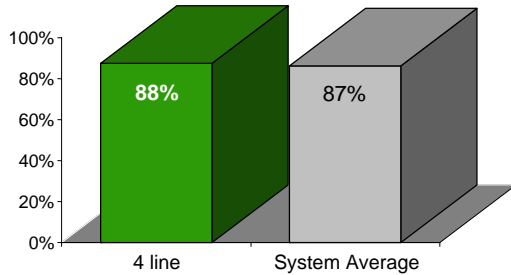
### The 4 line is scheduled to come much more often than most subway lines. . .

scheduled minutes between weekday trains as of January 2006

|                       | AM Rush     | Noon        | PM Rush     | Overnight |
|-----------------------|-------------|-------------|-------------|-----------|
| <b>4 line</b>         | <b>4</b>    | <b>5</b>    | <b>4</b>    | <b>20</b> |
| <b>System Average</b> | <b>5:33</b> | <b>8:26</b> | <b>5:48</b> | <b>20</b> |

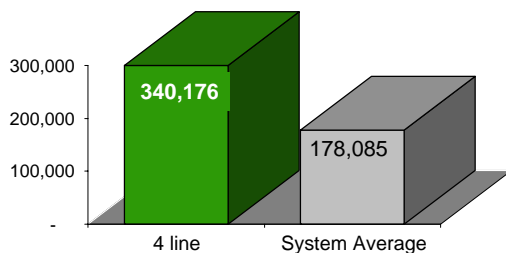
### and arrives with above-average regularity.

% of trains arriving at regular intervals (without gaps in service or train "bunching") between 6 a.m. and 9 p.m.



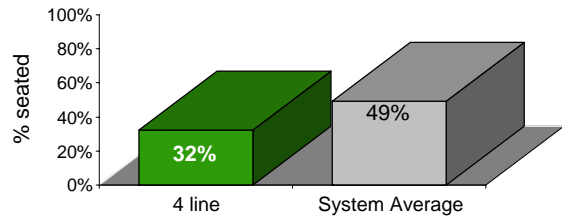
### Cars on the 4 line break down much less often than those on the average line.

average miles traveled between delays caused by mechanical failures, 2005



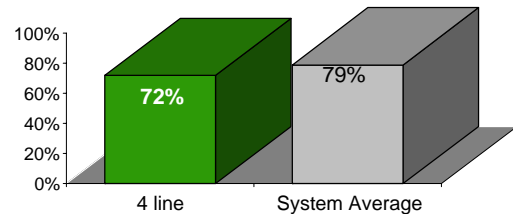
### You're much less likely to get a seat on the 4 line.

% of passengers with seats at most crowded point during rush hour



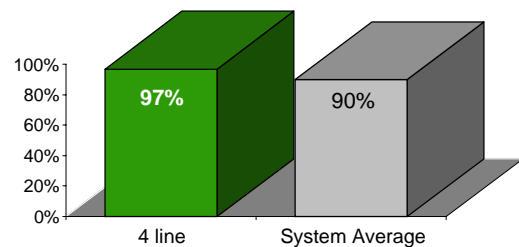
### The 4 line is less clean than average...

% of cars with 'light or no interior dirtiness' as defined by NYC Transit



### but performs much better than average on in-car announcements.

% of cars with correct announcements (as defined by NYC Transit)



**Suggestions? Complaints? Call the 4 line superintendent at (212) 424-4129.**