

Straphangers Campaign

2 SUBWAY LINE PROFILE



Straphangers Campaign MetroCard Rating \$1.00

The 2 line ranks tied for 11th place out of the 22 subway lines rated by the Straphangers Campaign. Our ranking is based on the MTA New York City Transit data below, using a method described at www.straphangers.org.

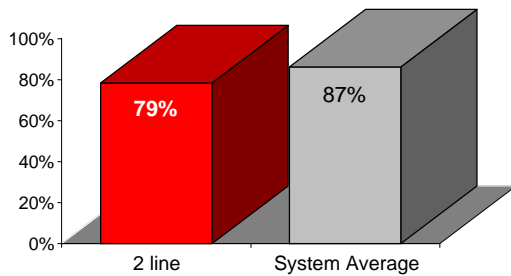
The 2 line is scheduled to come more often than most subway lines. . .

scheduled minutes between weekday trains as of January 2006

	AM Rush	Noon	PM Rush	Overnight
2 line	5	8	5	20
System Average	5:33	8:26	5:48	20

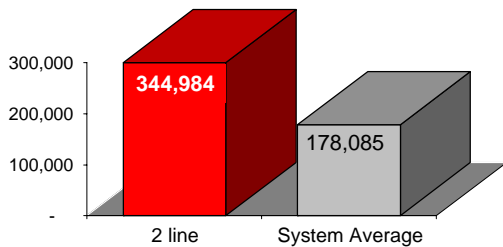
but arrives with lower reguarity than any other line in the system.

% of trains arriving at regular intervals (without gaps in service or train "bunching") between 6 a.m. and 9 p.m.



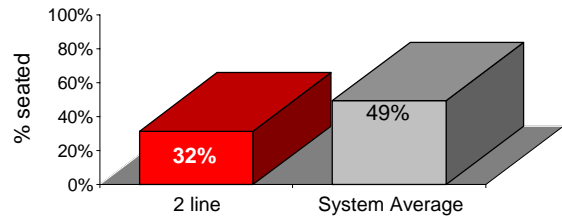
Cars on the 2 break down much less often than those on other lines.

average miles traveled between delay: caused by mechanical failures, 2005



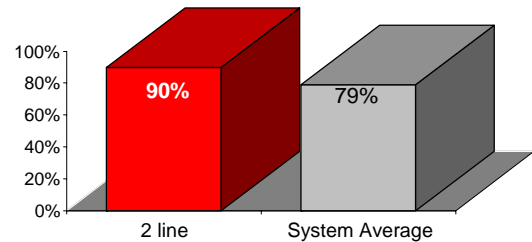
You're much less likely to get a seat on the 2 line.

% of passengers with seats at most crowded point during rush hour



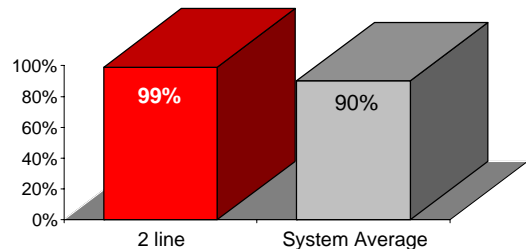
The 2 line is tied for the system's cleanest...

% of cars with 'light or no interior dirtiness' as defined by NYC Transit



and is also tied for best on in-car announcements.

% of cars with correct announcements (as defined by NYC Transit)



Suggestions? Complaints? Call the 2 line superintendent at (718) 430-5119.