

Straphangers Campaign

G SUBWAY LINE PROFILE



Straphangers Campaign MetroCard Rating **No Rating**

The G line profile is based on the MTA New York City Transit information below. (There is no MetroCard rating for the G. Its data on crowding cannot be compared to other lines.) Full methodology is available at www.straphangers.org.

The G line has a below-average amount of service. . .

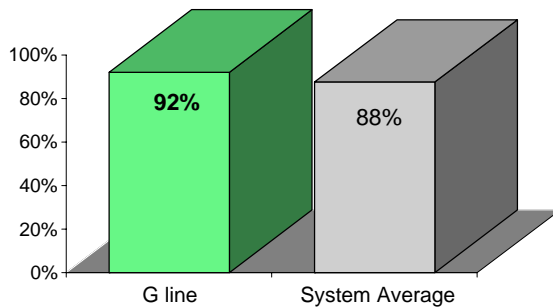
scheduled minutes between weekday trains as of February 2004

	AM Rush	Noon	PM Rush	Overnight
G line	7:30	10	8	20
System Average	5:43	8:26	5:55	20

Reliable crowding data for the G line is unavailable.

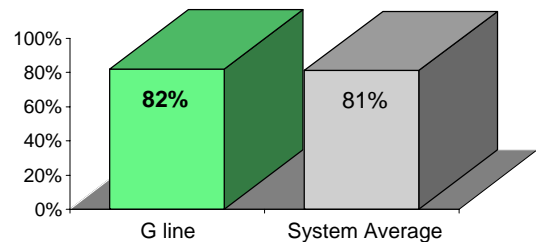
but arrives with regularity more often than the average line.

% of trains arriving at regular intervals (without gaps in service or train "bunching") between 6 a.m. and 9 p.m.



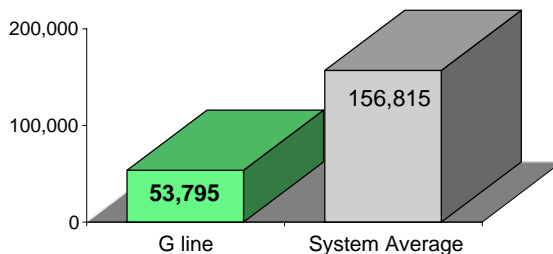
The G is cleaner than average. . .

% of cars with 'light or no interior dirtiness' as defined by NYC Transit



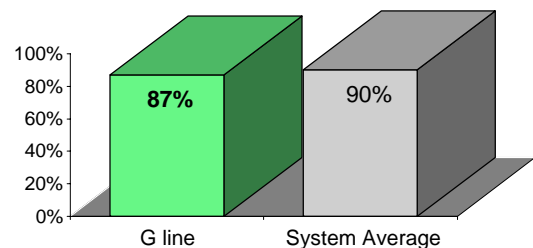
Cars on the G break down much more frequently than those on the average line.

average miles traveled between delay caused by mechanical failures, 2004



but performs below average on in-car announcements.

% of cars with correct announcements (as defined by NYC Transit)



Suggestions? Complaints? Call the G line superintendent at (718) 334-8190.